

TransNet



Your Partners in Power

September 2017

LV JUICE

Go Blue This September



Well-Hung Support Bracket

NZ designed and manufactured, the Well-Hung Support Bracket facilitates effortless installation of electrical and data cables on metal formed and wooden ceiling and wall battens. The bracket clips or screws to a multitude of batten profiles and trusses, ensuring cables are contained safely within the bracket catchment rather than landing in the bat-

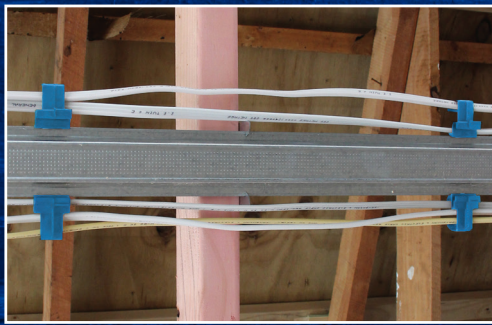
ten tray - avoiding the risk of electrocution from screws penetrating up through them.

Features

- Quick and easy to install
- Reduced labour costs
- Cables securely contained
- Ensures tidy wiring



Typical cable installation



Well-Hung installation

Proudly supporting:



Prostate Cancer Foundation
of New Zealand

WELL-HUNG

\$2.40 EA.*
+ GST

*SOLD IN PACKS OF 100



FREE PACK OF CHOCOLATE BLUEBERRIES

with every box of 100 Well-Hung sold this month

TransNet



Your Partners in Power



SV ENTERPRISES
INNOVATIVE SOLUTIONS



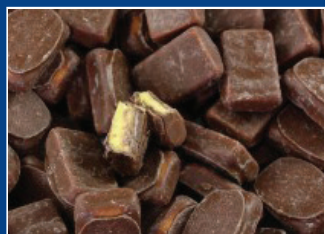
This Month

ESSENTIAL METALWARE
PAGE 2

CABLEAWAY POP UP
OUTLET BOXES
PAGE 3

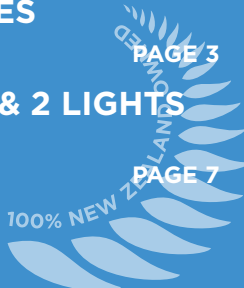
NEW ZONE 1 & 2 LIGHTS
BY RAYTEC
PAGE 7

FREE PINEAPPLE LUMPS
WHILE STOCKS LAST



When you spend over \$300 (excl GST) on one invoice this month

www.transnet.co.nz





NZ STYLE SPLIT BOLT CONNECTORS

Used in New Zealand since the late 1940s, This style of split bolt has proven to be a simple to use connector for use on copper overhead lines. Our NZ style

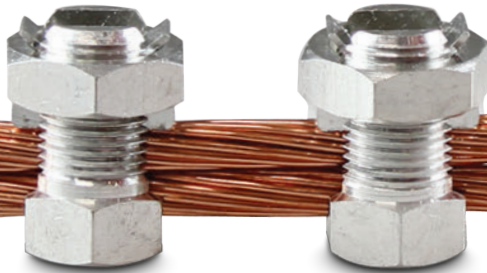
connectors are made in Australia from Australian Brass and have an electro tinned finish.

BENEFITS

- Simple to install - no special tools
- Affordable
- Range taking design - connectors fit multiple cable combinations
- Long-lasting
- Can be removed easily
- Range accommodates 4mm² to 120mm² (in just 8 connectors)
- Grooved plate to help grip wire & give better connection
- Hex nut for easy installation



Cat No.	Conductor Size Range				Torque Setting (Nm) Max.
	Min.* (mm ²)	Max.* (mm ²)	Min. (mm O.D.)	Max. (mm O.D.)	
TNHD9	4	7	2.7	4.1	5-10
TNHD10	6	16	3.8	5.8	10-15
TNHD12	10	25	4.3	6.6	15-20
TNHD12A	16	35	5.3	8.12	20-25
TNHD13	25	50	6.6	10.16	40-45
TNHD14	25	70	7.3	11.17	50-55
TNHD15	35	95	8.8	13.46	105-110
TNHD18	50	120	10.5	16.10	105-110



*Min/Max of each of the two conductors being joined.

Example: TNHD10 will accommodate: 2x6mm², 2x10mm², 2x16mm² OR any combination of two of these conductor sizes (6mm²/10mm²/16mm²)

NEW PRODUCT! BRASS EARTH BONDING STRAP

Made from H68 brass, TNESTRAP12 is sold by the metre in lengths up to 50m.

Cat No.	Hole Diameter (mm)	Strap Width (mm)	Distance Between Holes (mm)	Spool Length (m)
TNESTRAP12	6	12	15	50

*Fastenings not included



All Specials and Products featured in TRANSNET JUICE are available from all good electrical wholesalers.





Cableaway's floor outlet boxes are an ideal way to supply power to open floors of a commercial office building or residential area.

PUSF1P



The PUSF1P floor outlet box comes complete with a Stainless Steel flush lid and 1 x auto switched socket.

SPECIFICATIONS

Floor box body manufactured from powder coated zinc annealed steel

IP44 rated

20mm and 25mm knockouts provided for easy conduit entry

Data outlets optional extras

Frame and lid manufactured from Stainless Steel

Floor box carcass dimensions: W 99 x L 99 x D 54mm (D 72mm including lid)

1 x auto switched power outlet supplied

Floor box lid dimension W 124 x L 124mm



PUALF2P



The PUALF2P floor outlet box comes complete with a brushed aluminium flush lid and 2 x auto switched sockets (also available in a data-only configuration).

SPECIFICATIONS

Floor box body manufactured from powder coated zinc annealed steel

Floor box carcass dimensions: W 132 x L 132 x D 64mm (D 72mm including lid)

20mm and 25mm knockouts provided for easy conduit entry

Floor box lid dimension W 145 x L 145mm

Frame and lid manufactured from brushed aluminium

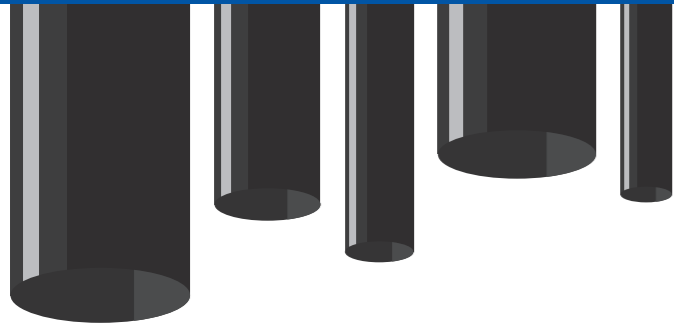
2 x auto switched power outlets supplied

IP44 rated

**.cable.
away**

Manage Cables Better

HOW TO SELECT THE CORRECT SIZE HEATSHRINK



Heatshrink tubing, unlike many other products, is designed to change shape when installed. Correctly sized tubing will conform to the substrate over which it is applied, shrinking in diameter and in general overall length and making it especially tricky to select the right size for your application. With so many different sizes available, how do you know which one is best for you?

RANGE INCLUDES

RNF	WCSM	DCPT
DWP	CNSM	FCSM
MWTM	CRSM	LVIT
	EZISHRINK	

RECOVERED ID VS. SIZE OF SUBSTRATE

To achieve a good robust installation of heatshrink tubing it is important to get the best fit of the tubing to the substrate. To do this, the tube needs to shrink by at least **20%** of its supplied size but not so far that the tube reaches its fully recovered size. It is best to have at least **10%** unresolved recovery after the tube is installed.



E.G. RNF-100-1

RNF-100-1 has a supplied size of 25.4mm and recovers to a maximum of 12.7mm. It should be used for applications where the expected recovered size is between:

$$12.7\text{mm} + 1.27\text{mm} = 13.97\text{mm}$$

(i.e. 10% of 12.7mm)

&

$$25.4\text{mm} - 5.08\text{mm} = 20.32\text{mm}$$

(i.e. 20% of 25.4mm)

Diameter

LENGTH SHRINKAGE

Just as the tubing will shrink in diameter, it will also shrink slightly in overall length during the recovery process (in general – in some cases it can grow in length). Different products have different longitudinal shrinkage percentages.

Please consult with a member of our technical support staff if this is a concern prior to placing an order. Make sure to account for this when specifying the cut length needed or when cutting the tubing in-house. When using a long length of tubing, it will need to be cut longer than the distance it needs to cover because of the shrinkage during recovery.



BIGGER IS BETTER

Always select the biggest size tube that will fit the application. It will be easier to install and achieve the target wall thickness of the installed tube. This will give a more robust solution.

INSTALLATION DO'S AND DON'TS

DO always use the specified dimensions for the recovered internal diameter of the tube. Sometimes the tube will shrink a little more than the Recovered ID specified, but it will always meet the maximum specified dimension.

DON'T cut the tube length to be the final installed length required. The tube will change length during recovery. The more you shrink it the greater the longitudinal change. The long change is noted in the product specification. Use it when calculating the cut length.

DO follow the installation guidelines, especially the guideline on cleaning and abrading the outer sheath of cables.

DO select the correct tube type for your application – for example, use adhesive lined tubes for sealing outer sleeves, not RNF.

DON'T recover the tubing over something with sharp edges, they can cut the tubing or puncture it which results in the tubing splitting during installation.

DO consult with one of our technical staff if you have any questions when selecting which size tubing is appropriate for your application.



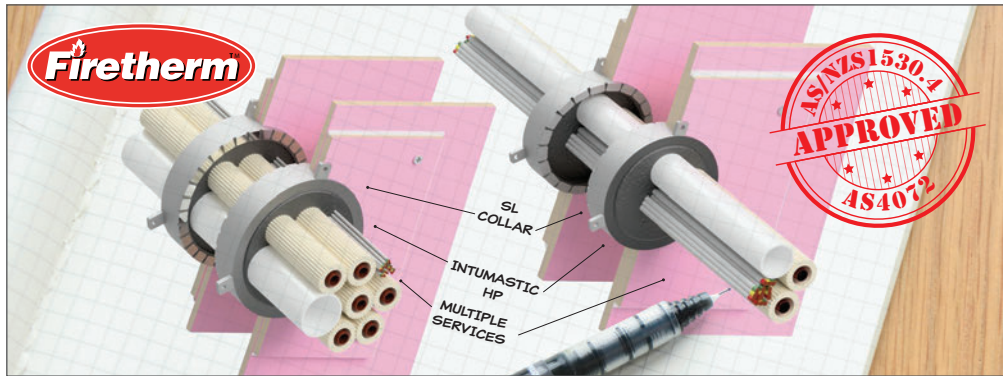
TO VIEW THE FULL RANGE PLEASE VISIT
WWW.TRANSNET.CO.NZ

Raychem
from TE Connectivity





FIRETHERM HVAC KIT



inverting the collar and fixing it into the plasterboard wall on both sides you can then fit multiple cables, a PVC pipe, and up to three A/C paircoil pipes through the collars, sealing the gaps with our Firetherm Intumastic HP.

For full installation instructions and technical support please contact us.

Cat No. FTHVAC80KIT



NEW TESTED SYSTEM

FOR AIR CONDITIONING SERVICE PENETRATIONS THROUGH FIRE WALLS

Passive fire protection behind wall mounted heat pumps and Air conditioning units!

Until now there have been very few compliant solutions for treating multiple services penetrating firewalls behind heat pumps and Air conditioning units. We have just tested a new kit for sealing cables, PVC pipes, and insulated pair-coil through fire rated plasterboard walls, and are pleased to

introduce the new Firetherm **FTHVAC80KIT**. Now you can achieve a 90 minute fire integrity rating, with all the services going through the same opening!

The Firetherm SL collar is a slimline, stainless steel fire collar, packed with Intumescent graphite to maintain the structural integrity and insulation of the service penetration in the event of a fire. By

FIRETHERM EXPANDING MASTIC HP

Firetherm Intumastic HP is a low smoke intumescent pressure exerting mastic used to seal fire rated openings where passage of flame is a risk. Manufactured under controlled factory conditions and to precise specifications, and tested to a variety of common scenarios in the New Zealand market.

FEATURES

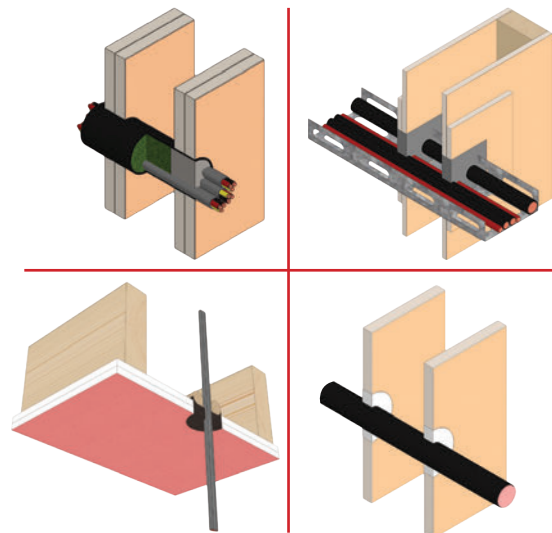
- Size: 310ml tube
- Colour: Grey
- Tack free time: 15-60 minutes depending upon temperature/humidity
- Standard minimum depth: 30mm (depending on system used)
- VOC: 4gm/litre

- Viscosity: 5,000-7,000 poise at 20°C
- Specific Gravity: 1.31 at 20°C

APPLICATIONS

Intumastic HP may be used to seal openings in fire compartment walls and floors around services such as suitably supported ducts, pipe work and electrical cabling against the passage of fire and can provide up to two hours integrity in block-work and plaster board wall constructions.

Cat No. FTMASTICHP



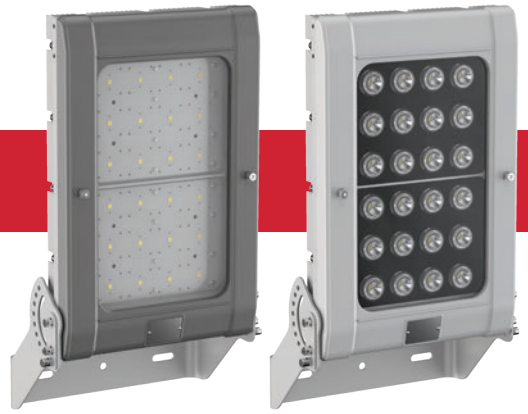
NEW! SPARTAN ZONE 1 & 2 LIGHTS BY RAYTEC



Designed to light up large, open areas such as on offshore oil rigs. The dedicated bracket allows the beam angle to be tilted and easily targeted into the required space.

SPARTAN HIGH POWER FLOOD

Available in Zone 1 and Zone 2



The new SPARTAN High Power Floods and Bay Lights are designed for hazardous environments which require high performance, high reliability, white-light illumination.

Using Raytec's field-proven, long-life LED technology SPARTAN luminaires are ATEX and IEC Ex approved for all Zone 1 & Zone 2 applications.

SPARTAN luminaires have been designed with maintenance in mind. A unique modular design allows key components to be easily accessed and serviced if required, making inspection and maintenance quicker and easier. It

also allows for the most flexible installation.

SPARTAN luminaires are available in a range of different beam patterns, delivering the ultimate flexibility to specifiers, distributors and end users.

SPARTAN uses CoolExtrude™ thermal management technology, ensuring a much cooler LED operating temperature and up to 60% better heat dissipation compared to traditional lighting solutions, allowing the product to operate for > 10 years while still delivering a high lumen output of up to 25,000 lumens.

Key Features

- ATEX & IEC Ex approved - Zone 1 & 2
- Ultra long life LED
- High lumen output
- Easy installation, maintenance & inspection
- Remote power supply variants available
- Extreme durability & toughness
- Wide operating temperature range of -50° to +50°C
- 0-10V dimming as standard
- DALI compatible
- Five year warranty

Contact customer services for full product range details



Five year warranty



ATEX & IEC Ex approved - Zone 1 & 2 (UL/CSA pending, including C1D2)



UK designed & manufactured

Why Raytec?

- UK designed & manufactured
- Manufacturing precision engineered LED products
- Award-winning technology



SPARTAN BAY LIGHT

Designed for use in very high area applications such as aircraft hangers or hazardous area warehouses, and other installations that require high quantities of light from a powerful ceiling mounted solution.

rayTEC®

Ph 0800 442 182
+64 9 274 3340

sales@transnet.co.nz

www.transnet.co.nz

SHED A LITTLE LIGHT ON IT

Fused Streetlight Connection Unit



TransNet New Zealand Ltd

Auckland

78 Cryers Road
East Tamaki
Auckland
NEW ZEALAND
Ph 0800 442 182
Fax 0800 442 183
PO Box 39 383
Howick, Auckland

Wellington

18 Sydney Street
Petone
Wellington
NEW ZEALAND
Ph 04 576 2530
Fax 04 576 0040
PO Box 39 383
Howick, Auckland

NEW ZEALAND

sales@transnet.co.nz

TransNet Tonga

Ma'ufanga

Small Industries
Ma'ufanga
TONGA
Ph +67 627 939
Fax +67 627 976
PO Box 2932
Nukualofa

TONGA

transnet@kalianet.to

The Charles Endirect range of cutouts has been designed for strength, durability, ease of installation and to meet the full requirements of BS 7654. The range features a secure and quick release carrier to provide safe and easy access to fuses and outgoing terminals.

This easy to use, slimline cutout is made to the highest quality standards using the best materials available in order to offer a long and reliable service life.

With safety at the forefront of the design process, the special cam operated fuse handle ensures electrical disconnection is achieved before the unit is opened and the fuse carrier extracted.

TECHNICAL SPECIFICATIONS

- Single pole isolation
- Single fuse (BS 88 Part 1, AC 16 tag type)
- 25A max fuse rating
- Electroplated brass terminals with serrated bores for better cable retention
- PVC grommets at cable entry points
- Designed and tested in accordance with BS 7654: 1997
- Outgoing cables exit below horizontal to ensure drip loop is formed
- IP22 rated
- Sealing wire facility
- Max cable size is 10mm²
- 316 Stainless Steel mounting bracket also available



Cat No.	Description	No. of Poles	No. of Fuses	Dimensions H x W x D (mm)
FD150-1-NZ	FUSED STREETLIGHT CUTOUT	SINGLE	SINGLE	150x69x56
FD221/K3	FUSED STREETLIGHT CUTOUT	DOUBLE	TWIN	150x87x63

TransNet NZ Ltd has made every reasonable effort to ensure the accuracy of this information and it is to the best of our knowledge correct and reliable. Under no circumstances does this constitute an assurance of any particular quality or performance and users should independently evaluate the suitability of products for their desired application. All information in this publication including pricing, drawings, illustrations, images and graphic designs are reflections of our current understanding. TransNet NZ Ltd reserves the right to make any adjustment to this information at any time. Our liability for the products outlined in this publication is set forth in our standard terms and conditions of trade. In case of any potential ambiguities or questions, please contact us for clarification.

